

NOTES

ELASTOMER IN ALL BEARINGS SHALL BE 50 DUROMETER
HARDNESS IN ACCORDANCE WITH THE STANDARD
SPECIFICATIONS.

AT ALL SUPPORTS, NUTS FOR ANCHOR BOLTS ARE TO BE TIGHTENED FINGER TIGHT AND THEN BACKED OFF $\frac{1}{2}$ TURN. THE THREAD OF THE NUT AND BOLT SHALL THEN BE BURRED WITH A SHARP POINTED TOOL.

SOLE PLATES, ANCHOR BOLTS, NUTS AND WASHERS SHALL BE GALVANIZED IN ACCORDANCE WITH THE STANDARD SPECIFICATIONS.

ALL BEARING PLATES SHALL BE AASHTO M270 GRADE 36

ANCHOR BOLTS SHALL MEET THE REQUIREMENTS OF ASTM A449. NUTS SHALL MEET THE REQUIREMENTS OF AASHTO M291-DH OR AASHTO M292-2H. WASHERS SHALL MEET THE REQUIREMENTS OF AASHTO M293. SHOP DRAWINGS ARE NOT REQUIRED FOR ANCHOR BOLTS, NUTS, AND WASHERS. SHOP INSPECTION IS REQUIRED.

AT THE APPROVAL OF THE ENGINEER, SOLE PLATES AT THE EXPANSION END MAY BE FIELD WELDED.

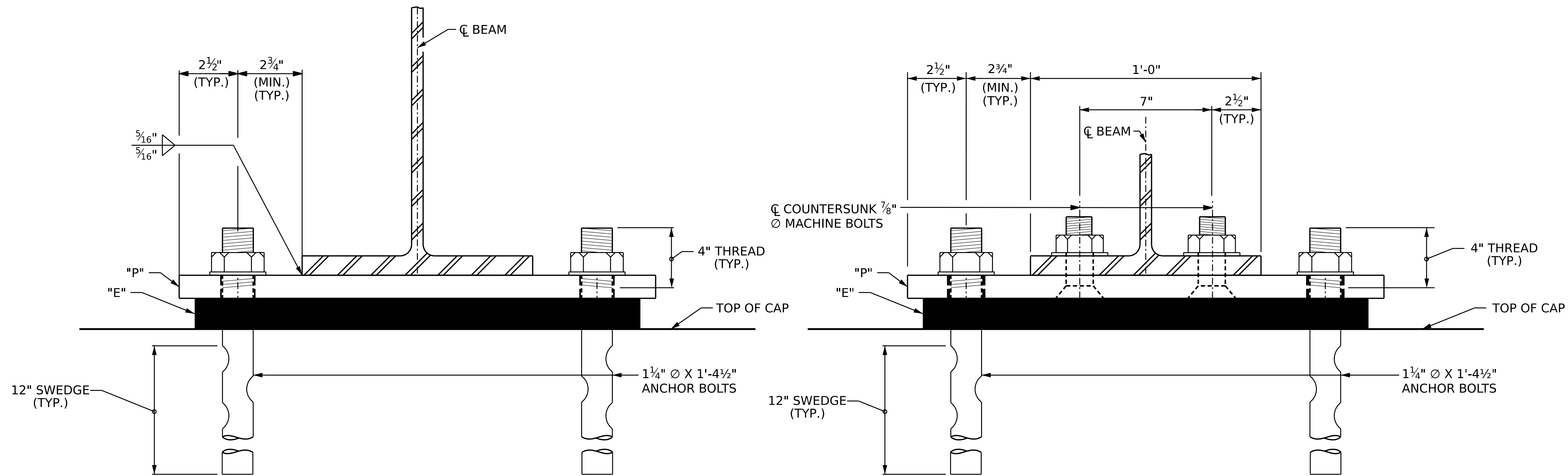
WHEN FIELD WELDING THE SOLE PLATE TO THE GIRDER FLANGE, USE TEMPERATURE INDICATING WAX PENS, OR OTHER SUITABLE MEANS, TO ENSURE THAT THE TEMPERATURE OF THE SOLE PLATE DOES NOT EXCEED 300° F. TEMPERATURES ABOVE THIS MAY DAMAGE THE ELASTOMER.

ALL SURFACES OF BEARING PLATES SHALL BE SMOOTH AND STRAIGHT.

AT NO ADDITIONAL COST TO THE DEPARTMENT, THE CONTRACTOR MAY USE ADHESIVELY ANCHORED ANCHOR BOLTS IN PLACE OF CAST-IN-PLACE ANCHORS. LEVEL 1 FIELD TESTING IS REQUIRED, AND THE YIELD LOAD OF THE ANCHOR BOLT IS 30 KIPS. FOR ADHESIVELY ANCHORED ANCHOR BOLTS OR DOWELS, SEE STANDARD SPECIFICATIONS.

ADHESIVELY ANCHORED ANCHOR BOLTS SHALL BE
THREADED FULL LENGTH.

AT THE APPROVAL OF THE ENGINEER, THE OPTIONAL BOLTED SOLE PLATE MAY BE USED AT NO ADDITIONAL COST TO THE DEPARTMENT.

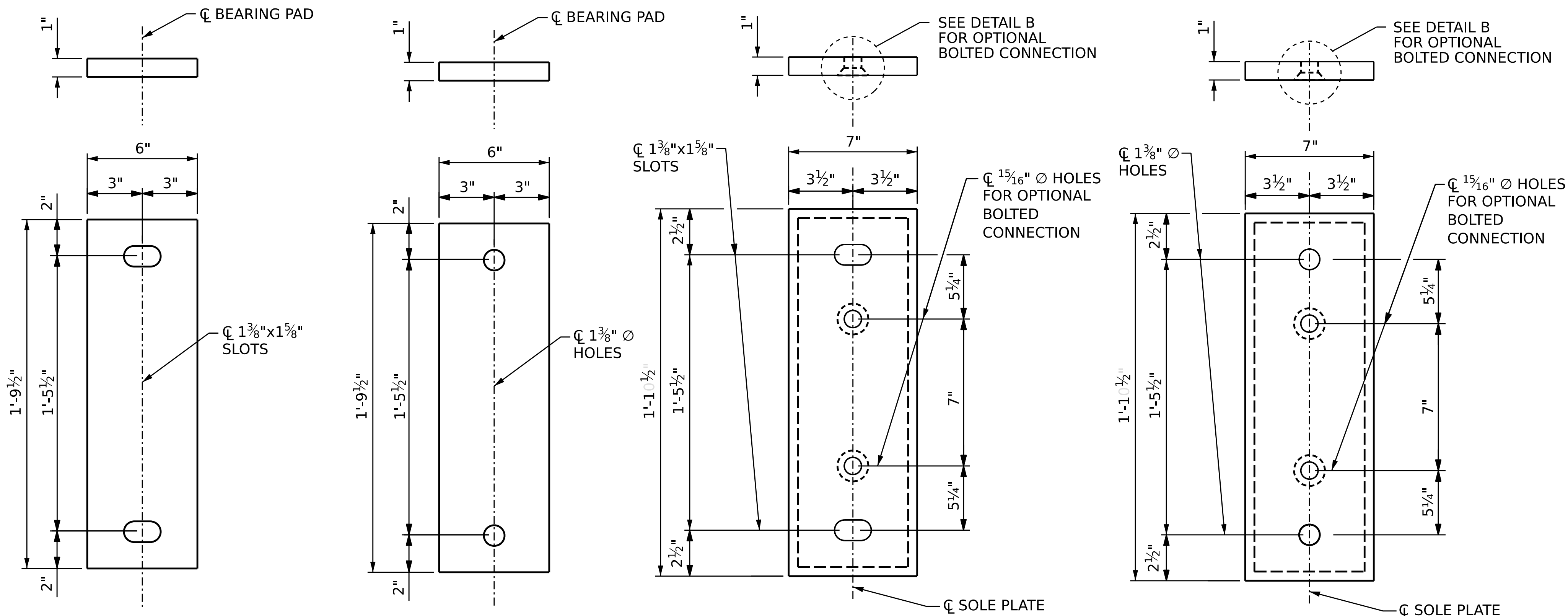


END VIEW

WELDED



OPTIONAL BOLTED



DETAIL B

PROJECT NO.: 18314.1044073

HAYWOOD COUNT

STATION: 12+13.00 -L-

E1 ELASTOMERIC BEARING DETAILS

(16 REQ'D)
EXPANSION

E2 ELASTOMERIC BEARING DETAILS

(16 REQ'D)
FIXED

P1 SOLE PLATE DETAILS

(16 REQ'D)
EXPANSION

P2 SOLE PLATE DETAILS

(16 REQ'D)
FIXED

BEARING PLATE DETAILS

DRAWN BY :	B. H. GONFA	DATE :	JUL 2025
CHECKED BY :	B. D. KLAPPENBACH	DATE :	JUL 2025
DESIGN ENGINEER OF RECORD:	B. D. KLAPPENBACH	DATE :	JUL 2025

RK&K
P: (919) 878-9560
8601 Six Forks Road, Forum 1 Suite 700
Raleigh, North Carolina 27615 | NC License No. F-0112
Engineers | Construction Managers | Planners | Scientists
www.rkk.com
Responsive People | Creative Solutions

North Carolina
PROFESSIONAL ENGINEER
SEAL
15825
ENGINEER
BRUCE D. KLAPPENBACH
12/15/2025

STATE OF NORTH CAROLINA
DEPARTMENT OF TRANSPORTATION
RALEIGH

STANDARD

BEARING DETAILS TYPE IV

REVISIONS						SHEET NO.
NO.	BY:	DATE:	NO.	BY:	DATE:	
1			3			S-11 TOTAL SHEETS 21
2			4			

DOCUMENT NOT CONSIDERED FINAL
UNLESS ALL SIGNATURES COMPLETED

STD. TB BRG TYPEIV